

Now with
Body Fluid
Mode

H 7100

Fully Automated 6-part differential Hematology Analyzer

Deeper Insights,
Better Care



INBUILT
AI CUBE
TECHNOLOGY

Flagging
to identify
p.vivax cases
of malaria

Scan to view
PRODUCT VIDEO



Fluorescence
Flowcytometry



70+
Parameters



Throughput upto
100 Samples/hour

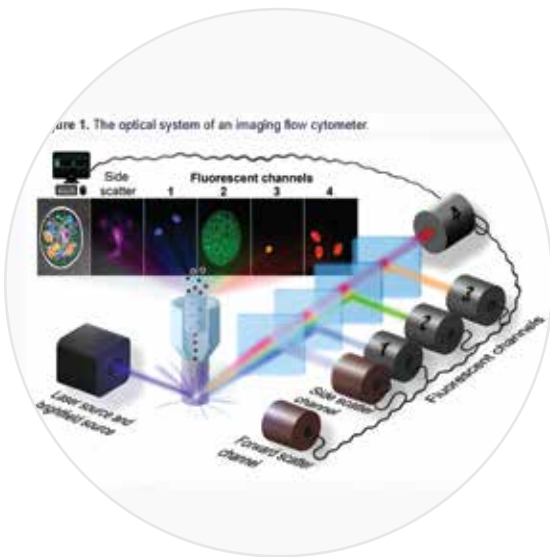
Making Automation Affordable
for labs Everywhere

H 7100

Fully Automated 6-part differential Hematology Analyzer

Designed to redefine hematology analysis, this state-of-the-art diagnostic instrument promises a paradigm shift in blood analysis capabilities, catering to the intricate needs of clinical laboratories and research facilities.

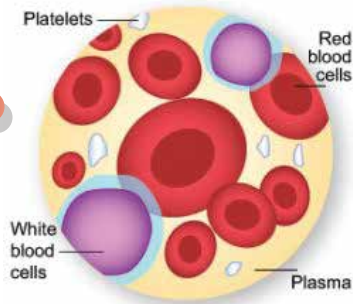
An extensive parameter range, featuring the Retics Panel, Immature Platelet Fraction (IPF), and Immature Granulocytes (IG), empowers healthcare professionals to conduct meticulous assessments of various hematological conditions. The array of data points not only aids diagnosis but also supports research endeavors, offering a wealth of information for analysis and interpretation.



Cutting-Edge Technology

ERBA H7100 provides cutting edge technology combining the **laser scattering, fluorescent method, and flow cytometry** in WBC differentials and reticulocyte measurement enabling advanced analysis of cell size, complexity, and fluorescence offering detailed differentiation of WBC subtypes and accurate quantification of reticulocytes, providing valuable insights into various hematological conditions and improving diagnostic precision.





Dependable Assays

A comprehensive panel of **70 parameters** offers precise diagnosis of various diseases including anemia, leukemia, infection and inflammation. It provides in-depth analysis of red and white blood cell morphology, hemoglobin levels, platelet counts and more, enabling accurate detection and monitoring of a wide range of hematological conditions.



Efficient Handling

An **autoloader with 60 samples loading capacity** streamlines workflow, saving time and reducing manual handling errors, enabling continuous sample loading, allowing for efficient processing of a large volume of samples with minimal user intervention.



Effortless Interaction

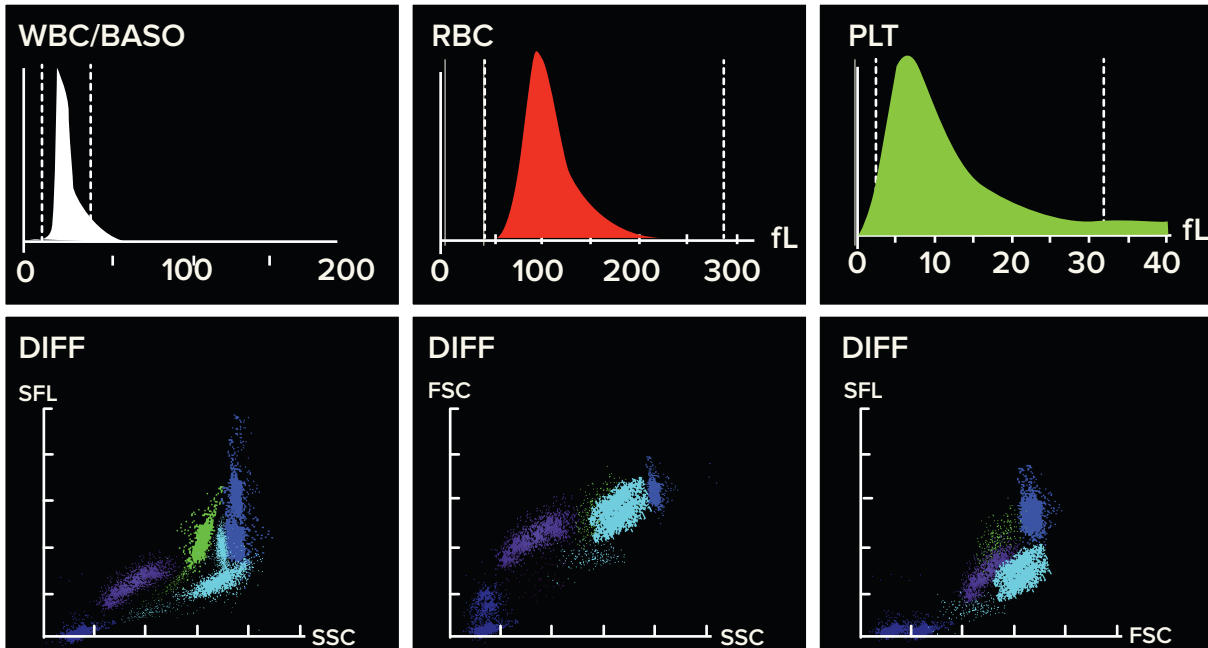
The touch screen display on H7100 provides intuitive navigation and user-friendly interaction, simplifying operation, data input, and result interpretation, enhancing overall usability and efficiency in the laboratory setting.



AI Cube Technology: Advancing Insights into AML and ALL Cases



Empowers clinicians with deeper insights into AML and ALL cases, enabling faster diagnosis and significantly improving turnaround time (TAT). By simplifying comprehensive data analysis and enhancing reporting efficiency, it offers excellent correlation with microscopy, streamlining the diagnostic workflow.



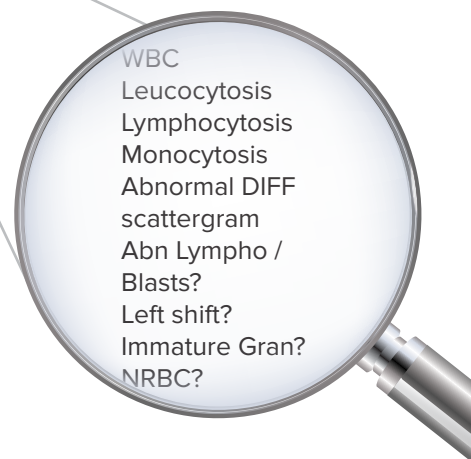
Interpreting Scatterplots

ERBA H7100 provides scattergrams and histograms giving essential visual representations of cellular characteristics and abnormalities and cell populations based on size and complexity, aiding in the identification of anomalies such as blasts or atypical lymphocytes.

| Name: | | Gender: | Age: | Sample No.: |
|--------------|------------|---------------|---------------------|---------------------|
| Sample Type: | | Bed No.: | Department: | Medical Record No.: |
| Time time: | | Patient Type: | Diagnosis: | |
| S.No | Parameters | Result | Unit | Ref. range |
| 1. | WBC | &H 22.56 | 10 ³ /μL | 3.50 - 9.50 |
| 2. | Neu% | R 43.9 | % | 40.0 - 75.0 |
| 3. | Lym% | R 27.6 | % | 20.0 - 50.0 |
| 4. | Mon% | RH 27.0 | % | 3.0 - 10.0 |
| 5. | Eos% | R 1.2 | % | 0.4 - 8.0 |
| 6. | Bas% | R 0.3 | % | 0.0 - 1.0 |
| 7. | Neu# | &H 9.91 | 10 ³ /μL | 1.80 - 6.30 |
| 8. | Lym# | &H 6.23 | 10 ³ /μL | 1.10 - 3.20 |
| 9. | Mon# | &H 6.10 | 10 ³ /μL | 0.10 - 0.60 |
| 10. | Eos# | & 0.27 | 10 ³ /μL | 0.02 - 0.52 |
| 11. | Bas# | & 0.06 | 10 ³ /μL | 0.00 - 0.06 |
| 12. | IG% | R 41.6 | % | |
| 13. | IG# | & 9.39 | 10 ³ /μL | |
| 14. | RBC | L 2.26 | 10 ⁶ /μL | 3.80 - 5.80 |
| 15. | HGB | L 6.6 | g/dL | 11.5 - 17.5 |
| 16. | HCT | L 20.9 | % | 35.0 - 50.0 |
| 17. | MCV | 92.3 | fL | 82.0 - 100.0 |
| 18. | MCH | 29.4 | pg | 27.0 - 34.0 |
| 19. | MCHC | 31.8 | g/dL | 31.6 - 56.0 |
| 20. | RDW-CV | H 20.0 | % | 11.0 - 16.0 |
| 21. | RDW-SD | H 63.8 | fL | 35.0 - 56.0 |
| 22. | PLT | RL 8 | 10 ³ /μL | 125-350 |
| 23. | MPV | *** | fL | 6.5 - 12.0 |
| 24. | PDW | *** | fL | 9.0 - 17.0 |
| 25. | P-LCR | *** | % | 11.0 - 45.0 |
| 26. | P-LCC | *** | 10 ⁹ /μL | 30 - 90 |
| 27. | PCT | *** | & | 0.108 - 0.282 |
| 28. | *WBC-D | R 22.56 | 10 ⁹ /L | |
| 29. | *TNC-D | 23.28 | 10 ⁹ /L | |
| 30. | *IME% | R 0.0 | % | |
| 31. | *IME# | & 0.00 | 10 ⁹ /L | |
| 32. | *NLR | R 1.59 | | |
| 33. | *PLR | *** ** | | |
| 34. | *HFC# | & 0.07 | 10 ⁹ /L | |
| 35. | *HFC%# | R 0.3 | % | |
| 36. | *NRBC# | & 3.2 | 10 ¹² /L | |
| 37. | *NRBC% | R 0.71 | % | |
| 38. | *Micro% | 3.2 | % | |
| 39. | *Micro# | 11.2 | % | |
| 40. | *Macro% | 17.7 | % | |
| 41. | Marco# | 0.40 | 10 ¹² /L | |

Unlocking Insights

Flagging in ERBA H7100 involves the automatic identification of abnormal or questionable results, allowing for further review by laboratory professionals. This crucial function helps ensure accurate and reliable analysis of blood samples, enabling timely diagnosis and treatment of various medical conditions.



Screening indices for IDA and Beta Thalassemia

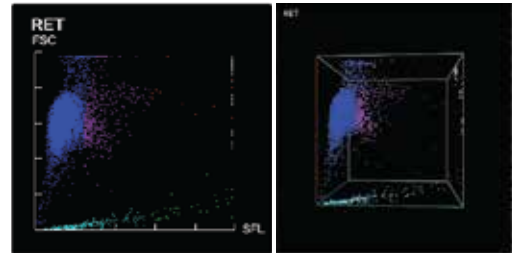
RDWI and Mentzer Index are reliable screening indices with high sensitivity and specificity in microcytic hypochromic anemia cases.

Exploring the Reticulocyte Panel Testing

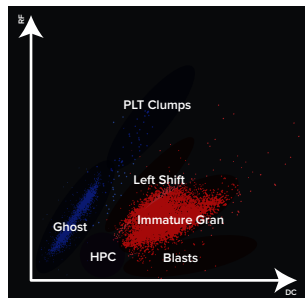
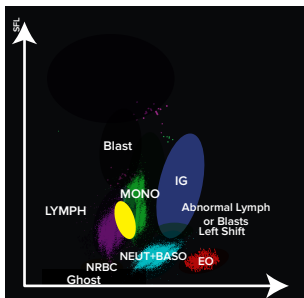
Retic Panel: ERBA H7100 with the Retic Panel offers a real-time snapshot of bone marrow iron status, providing valuable information about the balance between iron and erythropoiesis. It serves as a crucial measure for accelerated iron utilization compared to traditional markers.

The reticulocyte count is utilized to monitor the response to therapy in conditions related to chronic kidney disease, bone marrow failure syndromes, and diagnosis of hemolytic anemia and sickle cell anemia.

Reticulocyte Hemoglobin (RET-He) is proven and recommended in nephrology guidelines (NKF KDOQI). It is sensitive and an early indicator of current iron availability for erythropoiesis. It is used for monitoring erythropoietin and / or IV iron therapy



Unleash the Role of Immature Granulocyte Count



IG: IG count is important in the risk stratification and prognosis of patients with sepsis or other critical illnesses, as elevated levels are associated with increased disease severity and higher mortality rates.

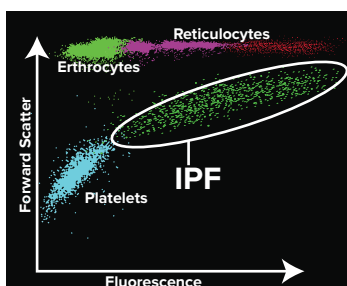
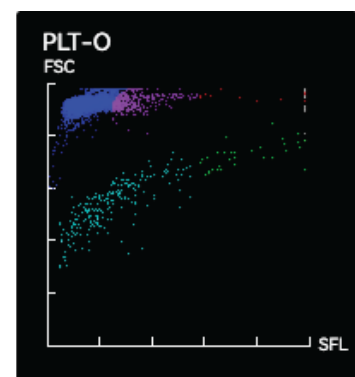
Monitoring IG count over time provides valuable information on the patient's response to treatment and the resolution of the underlying inflammatory process.

An increase in IG count, serves as an early indicator of inflammatory response and aids in distinguishing between infectious and non-infectious causes of leukocytosis.

Optical Platelet (Plt-O)

Optical Platelet (Plt-O) - addresses challenges like pseudo-thrombocytopenia in hematological analysis. Pseudo thrombocytopenia (PTCP) remains a pre-analytical challenge in hematological analysis with multiple etiologies, including improper venipuncture, inadequate mixing blood sample, sample clotting, PLT satellitism, giant or large platelets, and anticoagulant-related platelet. The Optical platelet count reduces the spurious count and is usually useful to correct spurious low platelet counts in EDTA-PTCP patients.

With all this, Erba H7100 is poised to revolutionize hematology analysis, delivering excellence in diagnostics and advancing healthcare through innovation. The H7100 stands out as a cost-effective and comprehensive solution, leveraging sophisticated algorithms and next-generation technology to elevate diagnostic and research efforts in hematology.



Immature Platelet Fraction (IPF)

Immature Platelet Fraction (IPF): Monitoring IPF enables early detection of bone marrow recovery and prediction of platelet engraftment timing, particularly valuable for patients undergoing chemotherapy or stem cell transplantation. It is a novel diagnostic tool to differentiate patients with thrombocytopenia due to increased destruction of platelets from those due to bone marrow/ suppression

References: Retics, IG, Optical Platelet & IPF

Technical Specifications

Test Modes

CBC, CBC+DIFF, CBC+RET, CBC+DIFF+RET, RET, CBC+DIFF(LW),CBC+RET(LP), CBC+DIFF+RET(LW+LP)

*LW: Low WBC (high accuracy and reliable results)

*LP: Low Platelet (high accuracy and reliable results)

42 Reportable Parameters

WBC, Lym%, Mon%,Neu%, Bas%, Eos%, IG%, Lym#, Mon#, Neu#, Eos#, Bas#, IG#; RBC, HGB, HCT, MCV, MCH, MCHC, RDW-CV, RDW-SD,PLT, MPV, PDW, PCT, P-LCR, P-LCC, RET%, RET#, RHE, IRF, LFR, MFR, HFR, IPF %, IPF #, PDW-CV, NLR, LMR, PLR, Mentzer, RDWI.

29 Research Parameters

WBC-D,TNC-D, IME%, IME#, d-NLR, HFC#, HFC%, NRBC#, NRBC%, Micro%, Micro#, Macro%, Macro#, H-NR%, L-NR%, PLT-I, RBC-O, PLT-O, WBC-O, MRV, RPI, IPF#, H-IPF, FRC#, FRC%, cwbc, Hypo He #, %, Hyper He #, %

Body Fluid

7 Reportable Parameters: WBC-BF, MN#, PMN#, MN%, PMN%, TC-BF#, RBC-BF

11 Research Parameters: Neu-BF#, Lym-BF#, Mon-BF#, Eos-BF#, HF-BF#, Neu-BF%, Lym-BF%, Mon-BF%, Eos-BF%, HF-BF%, RBC-BF2

Technology

WBC Differential / RET: Fluorescence Flow Cytometry

RBC & PLT: Impedance and Optical

HGB: Cyanide – free Colorimetric Method

Throughput

up to 100 Samples/Hour

Reagents: 7

Minimum Sample Volume

CBC+DIFF - 30 µl & **CBC+DIFF+RET** - 35 µl

Histograms & Scattergrams

3 Histograms

Two 3D Scattergrams

Eight 2D Scattergrams

Linearity

WBC: (0.0-500.0) x 10⁹/L

RBC: (0.0-8.6) x 10¹²/L

HGB: (0.0-26) g/dL

HCT: (0.0-75.0)%

PLT: (0.0-5000) x 10⁹/L

LIS

Bi-directional

LIS Protocol

HL7

External Interface

4 USB + 1 LAN port

Touch Screen

12.1 TFT touch screen

Autoloader Capacity

60

Data Storage

Analyser – 150000, PC: 500000

Net Weight

≤ 100

Dimension (mm) (W*H*D)

665 X 870 X 820

Ordering Information

| Product Code | Description | Pack size (ml) | Product Code | Description | Pack size (ml) |
|--------------|-------------------|----------------|--------------|---------------|----------------|
| 122325 | H 7100 Dil | 20000 | 1195112 | H 7 CON L | 1 x 3 ml |
| 122326 | H 7100 Dil ret | 1000 | 195113 | H 7 CON N | 1 x 3 ml |
| 122327 | H 7100 Lyse 1 | 500 | 195114 | H 7 CON H | 1 x 3 ml |
| 122329 | H 7100 Lyse 2 | 1000 | 195108 | H 7 ret CON L | 1 x 3 ml |
| 122336 | H7100 Fluro Diff | 42 ml | 195109 | H 7 ret CON N | 1 x 3 ml |
| 122334 | H7100 Fluro Ret | 24 ml | 195110 | H 7 ret CON H | 1 x 3 ml |
| 122398 | H Clean for H7100 | 10 X 4 ml | 166092 | Elite H CAL | 1 x 3 ml |

Erba Lachema s.r.o.

Karásek 2219/1d, 621 00 Brno, Czech Republic

Phone: +420 517 077 111

✉ sales@erbamannheim.com

www.erbamannheim.com

Transasia Bio-Medicals Ltd.

An ISO 13485:2016 / 9001:2015 Certified Co.

Transasia House, 8, Chandivali Studio Road,

Chandivali, Andheri (E), Mumbai - 400 072

T: (022) 4030 9000 F: (022) 2857 3030

✉ responses@transasia.co.in

